

## EDUCATIONAL GUIDE



Discover, Play, and Learn!





# Contents

1. Welcome to XPLORE
2. XPLORE thematic zones
3. Organizing a school visit
4. Playing and learning with safety
5. Visit XPLORE



## Where learning becomes an experience!

XPLORE is the ultimate destination for school visits, blending education with interactive play in ways that **inspire children while supporting educators' goals**.

Across three thematic zones – [Science](#), [Adventure](#), [Oceans](#) – students explore the world through hands-on, sensory-rich experiences that spark their imagination.

Every interactive installation and activity has been designed to build essential skills such as **observation, collaboration, problem-solving, and creative thinking**.

In our 4,500 sq.m. interactive space, children can:

- Discover how the human body functions
- Interact with life-size dinosaurs
- Experiment with natural phenomena and mechanical constructions
- Explore a stunning aquarium with 140 different marine species
- Step into a real TV studio and become news anchors

The **"Learn More, Play More"** educational tour is tailored for school groups and can be adapted to each class' age group and needs.



# **XPLORE thematic zones**

**XPLORE  
Science**

**XPLORE  
Oceans**

**XPLORE  
Adventure**





# XPLORE Science

## Discovering Science in Action!

In the **XPLORE Science Zone**, science turns into a game and knowledge becomes an experience.

Through interactive installations, students explore core scientific concepts, and are encouraged to think, experiment, and be curious.

Students learn:

- How the human body functions
- What energy is, how sound and light are created
- How the environment and the world around us are shaped through the power of air
- How motion and engineering transform our daily lives
- And they play with the most vital element of nature: water

During the educational tour, students:

- Apply what they learn in a physics class
- Discover how science contributes to everyday life
- Cultivate cognitive skills such as observation, critical thinking, and creativity
- Understand the world through experimentation





XPLORE

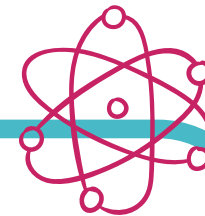
# Science

## Human Body

How does the human body function? What gives us energy?

Through hands-on activities, students explore the skeletal system, the journey of food, and the body's vital functions that keep us alive and active.

An interactive approach that connects biology with daily experience, making the human body easier to understand in a lively, simple way.







XPLORE

# Science

## Electricity

How much energy is needed to light up XPLORE's lamps?

Students discover the power of electricity through installations activated by their own movement. They create lightning, experiment with conductivity, and build circuits.

Physics comes alive through play, collaboration, and practice.





XPLORE

# Science

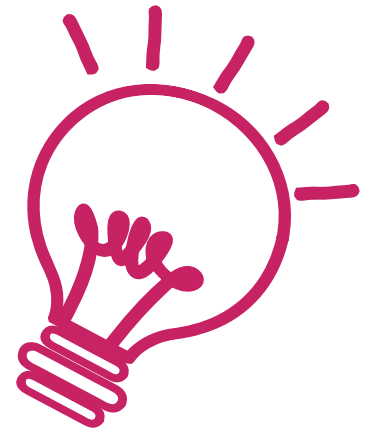


## Light

How was cinema invented? What does the spectrum of light hide?

Students explore how the science of light has led to innovations: from lasers and kaleidoscopes to perspective and "magic" mirrors.

They experiment with vision and learn how technology harnesses light in creative and exciting ways.







XPLORE

# Science

## Water

Can a single drop explain the power of nature?

At XPLORE, water becomes a mean to understand the fundamental principles of pressure, vortexes and energy transfer. Children experiment with tunnels, set an Archimedean screw in motion, and discover phenomena such as Bernoulli's principle.

In a collaborative environment, they play and learn while making bubbles and exploring the power of water.



XPLORE

# Science



## Sound

How does sound travel? And if we could see it, what shape would it be?

Students play piano with their feet, "aim" with a sound cannon, explore the intensity of a whisper, and turn theory into experience.

Through fun installations, they explore concepts like transmission, vibration, and frequency, understanding how sound reaches us and how the human body perceives it.





XPLORE

# Science



## Air

What is the power of air? How is it related to heat, gravity, and pressure?

Students experiment with aerodynamics, such as buoyancy and pressure drop. They discover how a hot air balloon or propeller works, why objects float, and how air can move everything – from a toy to a tornado.

An interactive experience that transforms physics into a game of discovery.

XPLORE

# Science

## Mechanics

How were huge blocks lifted during ancient years? How do levers and gears work?

Through practical activities, students explore basic mechanisms and understand how simple machines function. They discover how engineering solves everyday problems and learn to connect theory with practice in a creative, comprehensible way.







XPLORE

# Oceans

## Dive Into the magical seabed!

XPLORE Oceans is **Athens' only aquarium**, offering students a rare opportunity to discover the fascinating world of the oceans without leaving the city.

More than 2,000 fish, 140 different species, and 20 spectacular tanks host sharks, rays, king crabs, and many other sea creatures.

Students:

- Observe the biodiversity of marine ecosystems
- Learn why oceans are vital for the planet's future
- Connect emotionally with the environment through a real-life experience that does not transcend into real life solely through books and screens

As Jacques Cousteau once said: *"People protect what they love."* and at XPLORE Oceans, children learn to love the sea through the living experience of exploration.



XPLORE

# Adventure

## A journey to imagination and role-play!

At XPLORE Adventure, playing becomes a means for expression, creativity, and empowerment.

Here, children play freely, try new roles, move between real and imaginary worlds, and discover themselves through action.

In a space of 1,190 sq.m., designed with safety and emotional enrichment in mind, students are encouraged to engage in activities that build independence, cooperation, and creative thinking.

Across six thematic units, they can:

- Drive on a kart track, learning the basics of safe driving
- Explore the world of dinosaurs
- Become news anchors in a TV studio
- Create their own virtual city as future architects
- Experience an environment that encourages imagination, courage, and teamwork

XPLORE Adventure helps children build self-confidence through experiences that are more than just play, they are opportunities for personal growth.







# What We Offer:

- **Guided tour by specialized staff**

The XPLORE team welcomes, guides, and remains present throughout the visit, ensuring organization, safety, and support. Tours are also available in English upon request.

- **Choice of thematic area (or more!)**

Choose between XPLORE Science, Adventure, and Oceans or combine them all for a complete experience.

- **Experiential Learning**

Activities specially designed to enhance student participation and promote understanding through experience, interaction, and active learning.

- **Area for meals and rest**

The XPLORE Café provides a dedicated space for meals or short breaks, specially arranged for students and accompanying chaperons.

- **Souvenir shopping at the XPLORE Shop**

Students can purchase educational games, books, and small gifts with a 15% discount, taking a little piece of XPLORE magic home with them.

# Organizing a school visit

## School Bus Arrival

School buses arrive at the gray section of Golden Hall's parking lot, accessible via Spyrou Loui Avenue and Pittara Street. Students can be dropped off there; however, buses are not permitted to park inside Golden Hall's lot during the visit.

## Arrival Time

Visits are recommended Monday to Friday, 10:00–17:00. Please arrive within the scheduled timeframe to ensure smooth execution of the visit.

Delays may require changes to the program or even cancellation.

Kindly notify us promptly of any changes.

## Educational Tour Duration

Indicative duration: 45 minutes.

The tour and overall visit schedule can be adjusted.





# Playing and learning with safety



## **Certified Exhibits**

All exhibits are certified by TUV Hellas (Certificate No: 0877860/8786591/2025/ΠΕ).

## **Food**

Meals/snacks are allowed only in the designated XPLORE Café area.

## **Personal Belongings**

A storage area is available for students' and chaperones' personal items. We recommend that students bring only essentials.

## **In Case of an Accident**

Group safety is the responsibility of the accompanying adults. An agent is on-site to provide first aid and handle emergencies, as safety is our top priority. Please inform us immediately of any accident or potential hazard during the visit so that we can continue improving safety measures within the XPLORE facilities.

# Rules for a smooth visit at XPLORE

- Please arrive on time and organize groups outside the XPLORE premises to prevent congestion.
- The lead teacher is responsible for classroom behavior and must ensure the appropriate ratio of chaperones to students.
- Supervising teachers must continuously monitor students and ensure compliance with all rules and regulations.
- XPLORE staff may remind visitors of health and safety guidelines, which students are required to follow strictly.
- During your visit at the aquarium please do not tap on glass tanks, use flash photography or feed the fish.



## Useful Information

XPLORE is open to the general public; other visitors might be present during school visits.

Our priority is the welfare of the aquarium's marine species. For this reason, we cannot guarantee that all animals will always be visible.



# Visit XPLORE



## Contact

---

To express interest or ask for more information, please contact us via:

- ▶ the [online form](#)
- ▶ our email [schools@x-plore.gr](mailto:schools@x-plore.gr)
- ▶ our call center at 2106885454

## Opening Hours

---

Monday - Saturday: 10:00 - 21:00  
Sunday: 11:00 - 19:00

## You will find us at:

---

XPLORE  
Golden Hall (1<sup>st</sup> Floor)  
Kifisias Av. 37A, 15123 Marousi  
+30 210 688 5450



Discover knowledge through play!