

## Educational Guide



## Contents

1. Welcome to XPLORE
2. Visit a unique destination of education and entertainment
3. Visit XPLORE on your school trip
4. Organize your school trip
5. Play and learn with safety
6. Discover the world of Science, Oceans and Adventure

# 1. Welcome to XPLORE

XPLORE is an ideal area of entertainment and education, created to offer the joy of learning and knowledge in the most fascinating way!

The interactive exhibits of its three themed zones, Science, Adventure and Oceans, encourage experiential and active learning, through activities of inquiry and discovery, problem solving, collaboration and free play, in a safe and modern environment.

At the 4,500 sq. m. of XPLORE, you will learn all about the human body, dinosaurs, engineering, natural phenomena and superheroes, while discovering a modern TV studio and an aquarium with 140 species of fish!

Welcome to the world of XPLORE.





## 2. Visit a unique Destination of Education and Entertainment

Based on XPLORE's thematic zones, a number of educational programs were developed, including the innovative and pioneering educational program "Learn More, Play More".



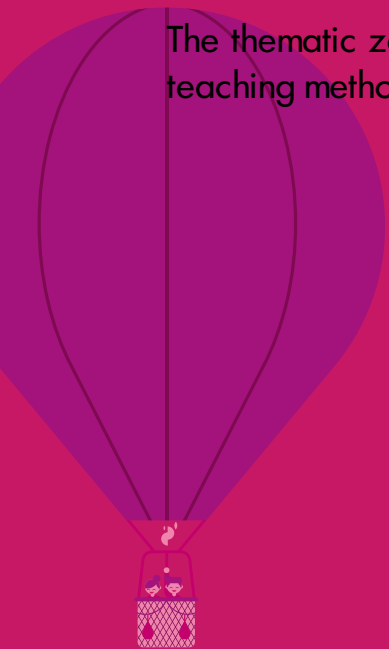
# Educational Themes

## XPLORE Science

In XPLORE Science, children will learn basic scientific principles, through experiential play.

Through interactive exhibits, students will have the chance to learn how the parts of the human body function, how energy, sound, power and light are produced, feel the air pressure, understand the concepts of mechanics and play with the main component of life: water.

The thematic zone XPLORE Science promotes the STEM teaching method in an entertaining and safe environment.







## XPLORE Oceans

XPLORE Oceans, Athens' first aquarium, offers a unique experience of the oceans' endless world.

More than 2.000 fish from 140 different species are waiting to be discovered, in 19 impressive tanks.

The XPLORE Oceans team believes that the best way to inform and educate our children about the miracle, beauty and greatness of oceans is by creating enriched experiences which go beyond any information they can find online, at home or in a book.

Because as Jacques Yves Cousteau, one of the founders of oceanography and marine protection, stated, "People protect what they love".





## **XPLORE Adventure**

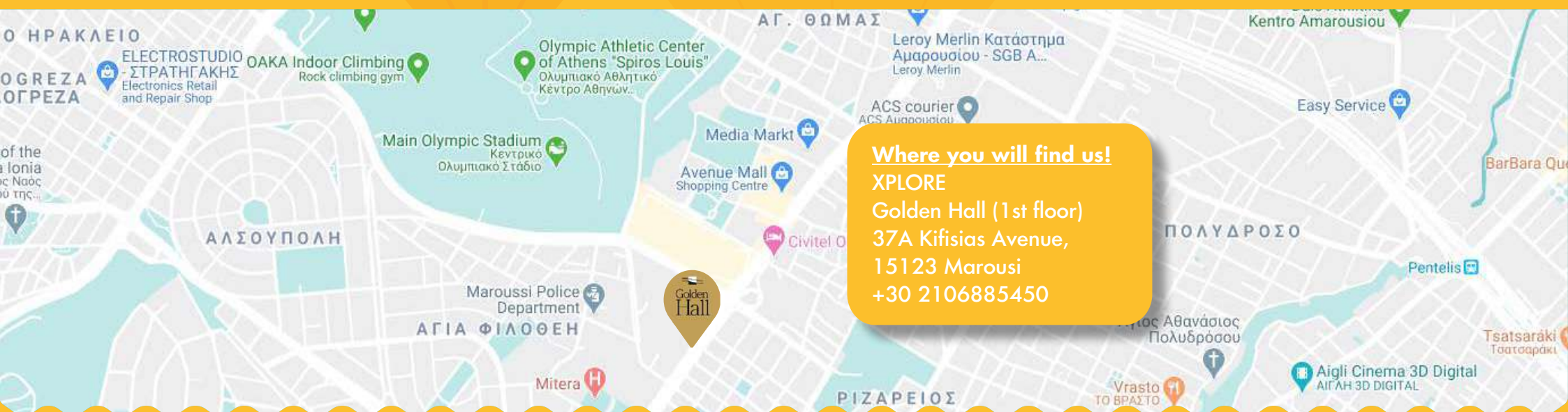
Here we emphasize on learning through imaginative play, which encourages children to try different activities and “live” in different environments, both real and imaginary.

And the most important thing is that all the above activities are offered in a safe 1,190 sq. m. area, appropriate for activities related to the students’ emotional empowerment both individually and collectively, always with the teachers’ guidance.

XPLORE Adventure includes 7 activities in total:

1. Castle Maze
2. Superheroes
3. TV Studio
4. Dance Studio
5. Construction Zone
6. Racing World/ Pit Stop
7. Dinosaurs XPLORE

### 3. Visit XPLORE for your school trip



#### Where you will find us!

XPLORE  
Golden Hall (1st floor)  
37A Kifisias Avenue,  
15123 Marousi  
+30 2106885450

#### Contact

For further information and reservations, please contact us via:

- the [interest form](#)
- e-mail [schools@x-plore.gr](mailto:schools@x-plore.gr)
- our call center 210 6885 454

#### Operating hours:

Monday - Sunday: 10:00-21:00





## What We Offer

- Tour by XPLORE's experienced and well-trained personnel, present throughout your visit.
- Possibility of choosing one or more educational zones.
- We would like to point out that XPLORE Science is a unique place of alternative education in Greece and XPLORE Oceans is the only aquarium in Attiki.
- Specially designed activities that promote experiential and active learning.
- Complimentary educational material, such as worksheets and consolidation exercises (optionally).
- Discount to XPLORE's thematic workshops, according to the annual program.
- Souvenir shopping from the XPLORE Shop with a 15% discount.
- Available area for lunch in XPLORE Café.

## 4. Organizing your School Trip

### Arrival Area

The parking area for the school buses is in the Grey Area of Golden Hall's garage, from the entrance of Spirou Loui & Pittara. The students can disembark in this spot; however, school buses are not allowed to remain in the parking lot.

### Arrival Time

For your convenience, we recommend the organization of school trips from Monday to Friday, between 10.00-17.00.

Please schedule your arrival within an arranged timeframe, as XPLORE has a lot of traffic. The visits are carefully arranged, and any delayed arrival may result in a delay and probably the cancellation of your visit.

Please inform XPLORE as soon as possible in case of any change.

*Indicative times per educational theme:*

**Science: 45 minutes**

**Oceans: 45 minutes**

**Adventure: 45 minutes**

There is a possibility of adjustment for the program and time limits, depending on the educational and entertaining aim of your visit.

### Purchasing Tickets

The payment for the whole amount must be made on the day of the visit, in cash or with a credit card. As the charge is based on the exact number of the people who are going to visit XPLORE, the final number of students and escorts must be declared two days before the visit. This number is considered binding.

The tax invoices that will be issued will be delivered to the School Administration or the designated leader of the school trip on the day of the visit.





### **Safety of the Area**

XPLORE's whole area and individual exhibits are certified by TUV Hellas (Certificate Number: 0877462/4132144/2019/AE.rev.3).

### **Food Consumption**

There is an available area for lunch in XPLORE Café.

### **Personal Belongings**

Space is provided for the students and escorts' personal belongings. We recommend students to bring along only necessary items.

### **In Case of Accident**

Please note that you are responsible for the first aid in your team, however, our personnel will be at your disposal for anything you might need. We would appreciate it if you could inform us of every accident or possible danger during your visit. This information is valuable for the improvement of XPLORE areas' safety.



## Κανόνες XPLORE

Below, XPLORE's basic rules are mentioned in brief. You will find them displayed in detail on XPLORE's website.

### (XPLORE Rules of Operation)

- Please schedule your arrival within the arranged timeframe and organize the teams outside the XPLORE area, in order to avoid overcrowding.
- The teacher in charge is responsible for the behavior of the class and must be certain about the necessary analogy of escorts and students.
- The supervising teacher is responsible for the constant supervision and monitoring of the students as well as the children's compliance with all rules and regulations.
- The XPLORE personnel can call the visitor's attention to certain health and safety regulations, which must be strictly respected by the students.
- In certain play areas of XPLORE, there might be some special effects (such as sudden and loud sounds and stroboscopic lighting).
- It is recommended for students with cardiac disease or other medical issues to ask XPLORE personnel for more details, in order to avoid areas where such special effects are used.
- Please **do not** knock on the glass tanks, **do not** take photos with flash and **do not** feed the fish during your visit at the aquarium.

## Useful Information

- XPLORE is always open to the general public, therefore it is possible to have other visitors in the area at the time of your visit.
- Our priority is the welfare of the aquariums' marine species. We cannot guarantee that they will always be visible.



## 5. Play and learn with safety

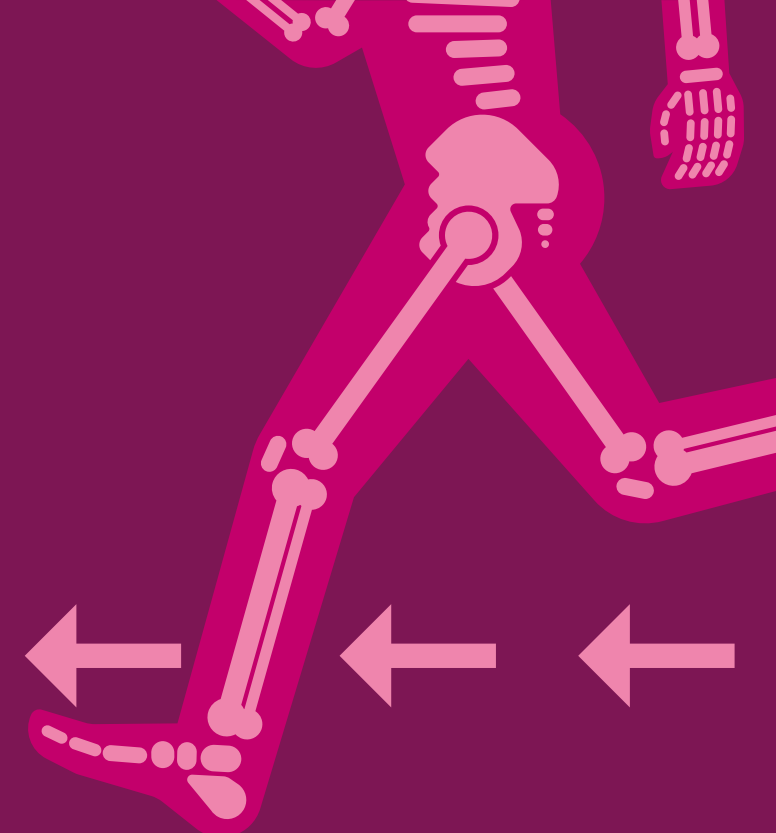
XPLORE's whole area and individual exhibits  
are certified by TUV Hellas  
*(Certificate Number: 0877462/4132144/2019/AE.rev.3).*



## 6. Discover the world of Science, Oceans, and Adventure through XPLORE.

The information below has been designed to help both teachers and students make the best of their visit at XPLORE.



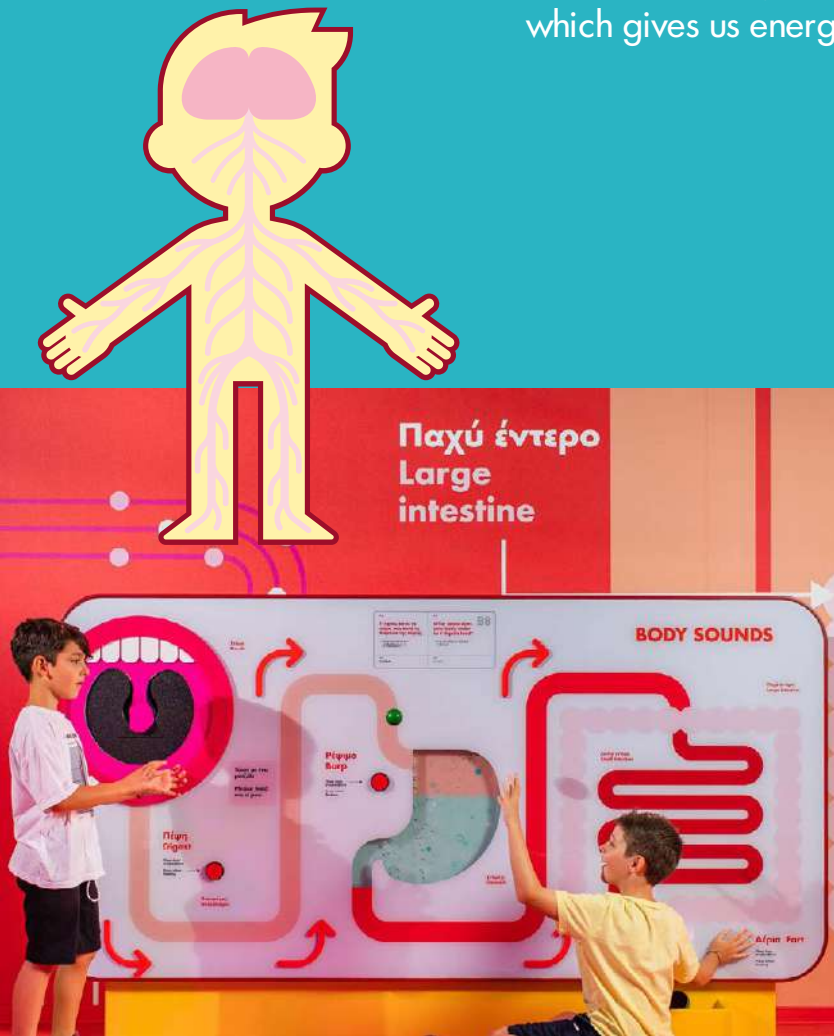


"At XPLORE Science, your students have the chance to see how technology contributes to our lives, to practice everything they learn in the subject of physics, to be alert to give their own solutions to any questions and to understand the world through experimentation."

# Science

## The Human Body

In the Body section of XPLORE, students explore our fascinating world by analyzing the daily processes of the human body, discover their skeleton and observe the digestion process, which gives us energy.



## Electricity

“Do you have enough energy to light the lamps of XPLORE? We challenge you to solve the electrical circuits and discover the power of lightning”.

Students interact with exhibits that run on their own kinetic energy, create lightning and discover how their knowledge of electrical circuits is put into practice.

By playing with electricity, conductance and the ability to transmit energy, they learn even more!





## Water

“Unlock the potential of the liquid element! Water is so powerful that it can move the whole world and so simple that it can create a giant soap bubble.”

The interactive table of water encourages experimentation with past and present inventions and the understanding of the natural and man-made phenomena caused by water.

Students are introduced to the concepts of vortex, pressure and water transport through makeshift tunnels, Archimedes' screw and Bernoulli's principle.



## Light

Using light, inventions such as the cinema, the laser and the kaleidoscope, but also concepts like perspective are born. At the same time, through our own vision and with the help of technology, we can use the spectrum of light in new ways.

In the Light section, children will learn new, exciting information, paint in the air and discover how magic mirrors “work”!



## Air

“How do helicopters fly? How does a hot-air balloon take off? What potential does the air have? How does its pressure work, combined with heat and gravity?”

From the strength of a hurricane to man’s ability to fly, XPLORE’s Air area offers a lot of knowledge. Students attempt to launch a propeller, a hot-air balloon, and even make an object levitate.



## Mechanics

“How does a machine work? How did they manage to lift big masses in ancient times? Discover the mechanisms that led to today’s machines.”

The lever and the cogwheels show us the internal function of machines, but also the origin of the most complex inventions.

Here, students will understand machines’ internal connections and their important role in the creation of today’s world.

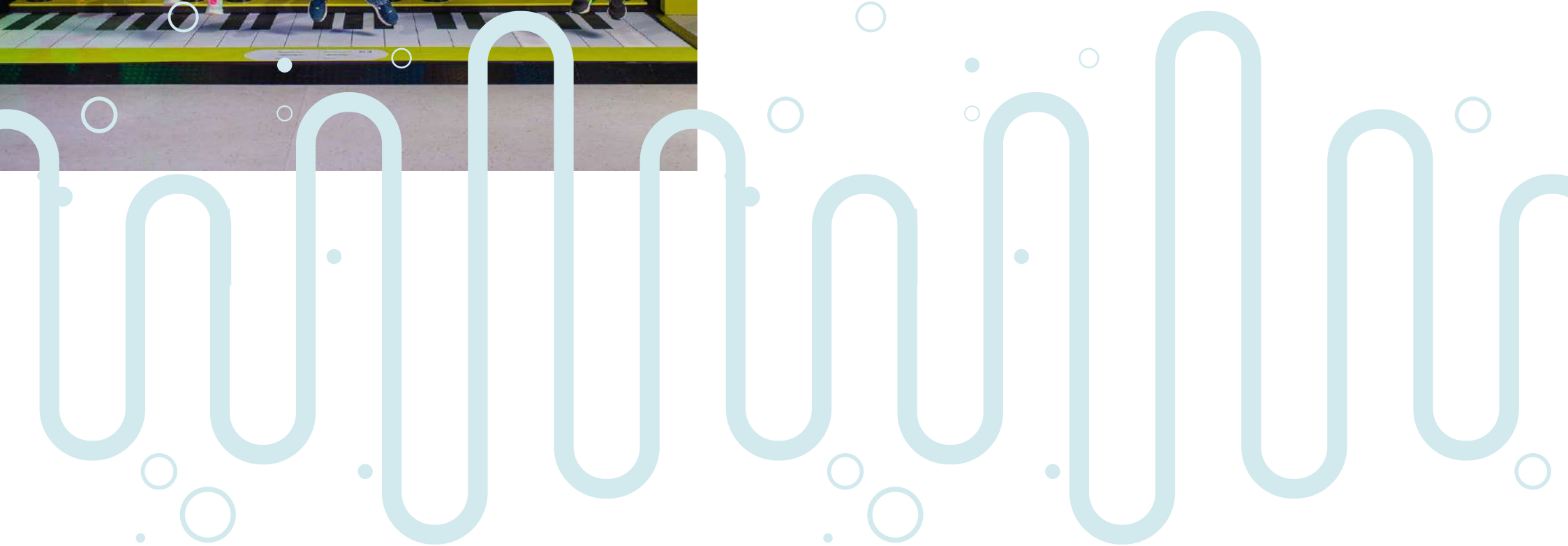


## Sound

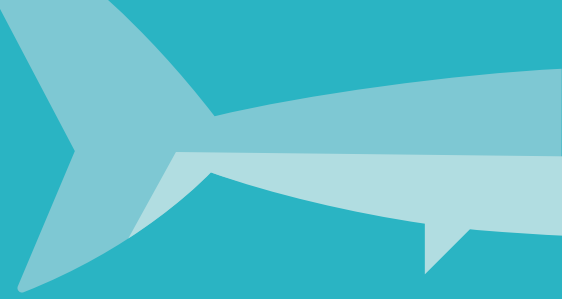
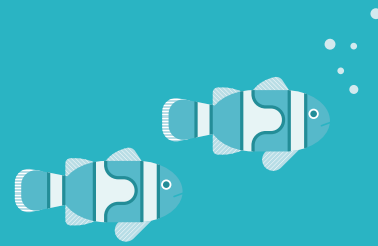
"Are you ready to play the piano with your feet? What are the secrets of sound? How does sound travel and what shape would it have if we could see it?"

The gigantic musical instruments give "ground" to the sense of sound, the cannon sound reaches its target, and a whisper is heard at full blast.

In this section, students will learn how sound is transmitted and how it finally reaches us, through their senses.







Inside the tanks of XPLORE Oceans we have more than 2.000 fish from more than 140 species, such as sharks, rays and horseshoe crabs.

Through the educational elements presented in our aquarium, children can get to know closely the beauty and the mysteries of the oceans and the sea that surrounds us. In this way, they become more sensitive in understanding and protecting the ocean and life in them, for the future generations.

# Oceans





XPLORE Adventures highlights learning through imaginative play.

The play is free flowing, encouraging children to try different activities, and “live” in different environments, both real and imaginary.

Most importantly, this chance is given in a safe environment.



# Adventure

## The Castle

Discover the great mirror maze inside the Castle's impressive walls!

Transparent walls create complex paths with many turns and dead ends. Will the kids manage to find their way out with the right strategy and collaboration?



## 3, 2, 1, Race!

Join the XPLORE honorary racing team! Compete in a speed race, pick your favourite kart and speed up! If you're good enough at tackling its twists and turns, you might become the next Race Champion!





## TV Studio

On the XPLORE TV Studio students will have the chance to become a news presenter or a weather forecast presenter!

Their classmates can become directors, adjusting the modern and professional console, while viewers watch them live from the screen, just outside the studio.

## Dance Studio

The world of Disco comes to life, right in front of you.

Kids can dance, show you their moves, and enjoy themselves to the fullest in a place full of spectacular lights and music!





## Dinosaurs

In the adventure jungle of XPLORE, students have the chance to observe tyrannosaurus, velociraptors and take photos inside their eggs.

They can also create volcanoes and lakes with the sand on the table and find the escape plan from the laser maze!



## Construction Area

In the construction area, kids can build, dig, climb and create anything they can imagine.

They work with their friends to move the materials and bricks, climb the huge excavator and build their own virtual city!

# Thank you!

For further information and reservations, please contact us via:



the [interest form](#)



e-mail: [schools@x-plore.gr](mailto:schools@x-plore.gr)



our call center 210 6885 454



**A place of Entertainment, Education  
and Imagination, for all!**